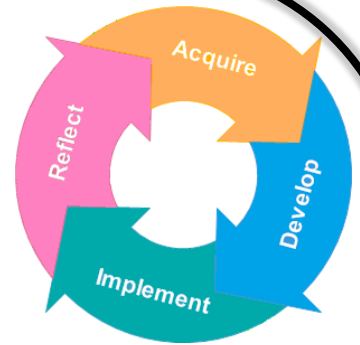


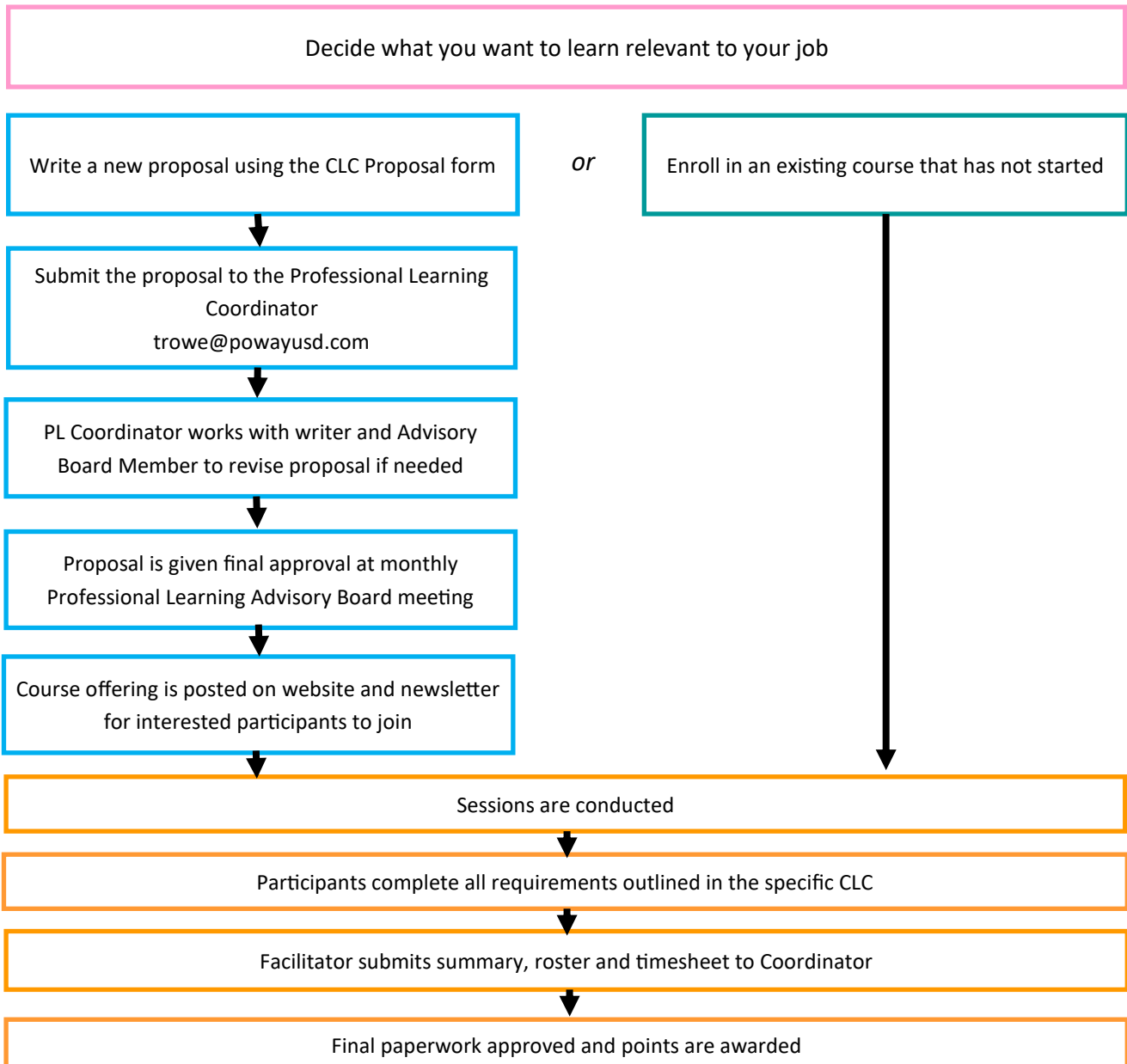
Classified Learning Cooperative Program Overview



What is the Classified Learning Cooperative program?

The purpose of the Classified Learning Cooperative Program (CLC) is to offer non-restrictive learning opportunities that can be designed for individuals or small groups to acquire new skills, develop skills in a collaborative group, implement learning in the workplace, and reflect on the process.

How does it work?



POINTS

5 points = approximately 20 hours of work
10 points = approximately 40 hours of work
20 points = approximately 80 hours of work

- * Points will be awarded in increments of five (5). Partial points will not be allocated.
- * Points have an expiration date of five (5) years from the date earned.
- * PSEA Classified employees who acquire 40 CLC points will receive financial compensation valued \$700 per year, payable on a tenths basis, for three (3) years.